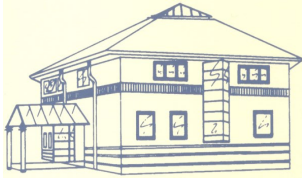


Patient Newsletter



TRAINING DAYS

**Tuesday 4
February 2025**

GLMC will be closed from 1pm until the following morning at 8am to allow for staff training.

***In an emergency
please telephone
NHS 111***



***Hayley Brassington
Business Director
Winter 2024/2025***

CHRISTMAS OPENING HOURS

The practice will be **closed** over Christmas on:

**WEDNESDAY 25 DECEMBER 2024
THURSDAY 26 DECEMBER 2024
WEDNESDAY 1 JANUARY 2025**

We will be open as normal on all other working days (8am—6.30pm). If during our closure you need urgent medical assistance that cannot wait until the practice re-opens please dial NHS 111.

We wish all our patients a Merry Christmas and a Happy New Year!



CHRISTMAS PRESCRIPTIONS

Please ensure you check your medications prior to our Christmas closures to ensure you have enough medication to last over the festive season.

Speak to your local pharmacy about last collection dates for Christmas.

**PATIENT
GROUP
MEETING**

The Patient participation Group allows patients to engage with the practice and become more involved.

The next meeting will be **Thursday 16 January 2025** in the Fountains Building.

If you would like to join the next meeting, please contact pcnchestercentral@nhs.net



FLU & COVID CLINICS

Our large Flu & COVID clinics took place throughout October with a number of smaller clinics throughout November. The demand for these vaccinations this year was incredibly high.

In October alone we administered over 1000 COVID vaccinations & nearly 1300 Flu vaccinations.

Thank you to all our patients who attended, It is always a nice opportunity to speak with patients at the clinics.

RSV Clinics

A new campaign has started this year for Respiratory Syncytial Virus. (RSV) A virus that affects the lungs and cause pneumonia. A vaccination is now being offered to Pregnant Ladies and patients aged 75-79. All invitations for eligible patients have been sent now and clinics are running throughout November & into December whilst the demand is there. So far it has proven very popular and we will continue to contact eligible patients. If you believe you are eligible and haven't been contacted, please telephone reception on 01244 346677.

Patient Fund

Our Fantastic Patients fund has recently purchased two new 24 Hour Blood pressure monitors to support our patients when requiring prolonged Blood pressure monitoring. The new machines will improve the quality of the data for our nursing team and give more accurate monitoring. Thank you!

To sign up to receive our Patient Newsletter by email each time it is published, simply go onto our website (as below), scroll to the bottom to the 'Keep up to date with the latest practice news' section and fill in the mini form. Each time a new Patient Newsletter is published you will then automatically be sent a copy via your email.

WEBSITE ADDRESS—www.gardenlanemedicalcentre.co.uk