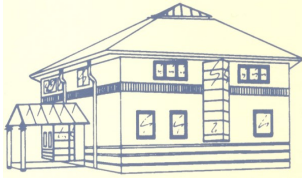


Patient Newsletter



TRAINING DAYS

Tuesday 19 March

Tuesday 9 April

Wednesday 15 May

GLMC will be closed from 1pm until the following morning at 8am to allow for staff training.

***In an emergency
please telephone
NHS 111***



***Hayley Brassington
Business Director
Spring 2024***

SHINGLES & PNEUMONIA

Invites are now regularly going out for patients eligible for either a shingles or pneumonia vaccinations. Where possible we now send patients a self booking link so that you can book yourselves direct into appropriate clinics without needing to telephone the practice.

EASTER OPENING HOURS

The practice will be **closed** over Easter on:

FRIDAY 29 MARCH 2024

MONDAY 1 APRIL 2024

We will remain open as normal on all other working days 8.00am-6.30pm. If during our closure you need urgent medical assistance that cannot wait until the practice re-opens please dial NHS 111.

We wish all our patients a lovely Easter!

Pharmacy First

In January 2024 a new pharmacy first scheme was launched nationally. The Majority of local pharmacies in Cheshire West are signed up to this scheme.

Pharmacy First enables community pharmacists to supply prescription-only medicines, including antibiotics and antivirals where clinically appropriate, to treat seven common health conditions without the need to visit a GP.

- Sinusitis
- Sore throat
- Earache
- Infected insect bite
- Impetigo (a bacterial skin infection)
- Shingles
- Uncomplicated urinary tract infections in women.

PATIENT GROUP MEETING

The Patient participation Group allows patients to engage with the practice and become more involved.

The next meeting will be Thursday 23 May at 9.30am in the Fountains Building (3rd floor).

If you would like to join the next meeting, please contact
pcnchestercentral@nhs.net



STAFF UPDATE

As many of you know, Gill Pejic, health care assistant, retired from Garden Lane Medical Centre at the end of September 2023

We now have our new health care assistant, Carlea Barnes, who works Mondays, Wednesdays, Thursdays and Fridays.

RELIVE PHYSIO

We now have access to an additional physio service.

Treatable:

- **Soft tissue injuries, sprains, strains, sports injuries**
- **Arthritis**
- **Muscular issues**
- **Spinal pain**
- **Spinal-related pain in arms/legs**
- **Post orthopaedic surgery**

Relive Physio can be booked via Reception as you would usually for the above conditions. The service is situated on Foregate Street but accessed via City Road in Chester.

COVID BOOSTERS

Our winter COVID boosters concluded on 31 January 2024. Thank you to everyone who attended the clinics and for the positive feedback.

We will also be commencing spring COVID boosters towards the end of April. This will be for any patients who are 75 or over (including those who are 75 as of 30 June 2024) and patients aged over 6 months who are immunosuppressed. Invites will be sent out over the coming months. There are no confirmed clinic dates as of yet, we are still in the planning stages.

To sign up to receive our Patient Newsletter by email each time it is published, simply go onto our website (as below), scroll to the bottom to the 'Keep up to date with the latest practice news' section and fill in the mini form. Each time a new Patient Newsletter is published you will then automatically be sent a copy via your email.

WEBSITE ADDRESS—www.gardenlanemedicalcentre.co.uk